



**REGIONAL SPECIALISED METEOROLOGICAL CENTRE-TROPICAL CYCLONES, NEW DELHI TROPICAL WEATHER OUTLOOK**

**DEMS-RSMC TROPICAL CYCLONES NEW DELHI DATED 15.05.2024**

**TROPICAL WEATHER OUTLOOK FOR NORTH INDIAN OCEAN (THE BAY OF BENGAL AND THE ARABIAN SEA) VALID FOR NEXT 168 HOURS ISSUED AT 0600 UTC OF 15.05.2024 BASED ON 0300 UTC OF 15.05.2024.**

**BAY OF BENGAL:**

YESTERDAY'S FEEBLE CYCLONIC CIRCULATION OVER SOUTHEAST AND ADJOINING EASTCENTRAL BAY OF BENGAL BECAME LESS MARKED AT 0300 UTC OF TODAY, 15<sup>TH</sup> MAY, 2024.

A FRESH CYCLONIC CIRCULATION LAY OVER SOUTHWEST BAY OF BENGAL & ADJOINING SOUTH SRI LANKA EXTENDING UPTO 4.5 KM ABOVE MEAN SEA LEVEL TILTING SOUTHWESTWARDS WITH HEIGHT AT 0300 UTC OF TODAY, 15<sup>TH</sup> MAY, 2024.

SCATTERED LOW AND MEDIUM CLOUDS WITH EMBEDDED INTENSE TO VERY INTENSE CONVECTION LAY OVER SOUTH ADJOINING WESTCENTRAL BAY OF BENGAL (MINIMUM CLOUD TOP TEMPERATURE -93<sup>0</sup>C) SOUTH ANDAMAN SEA AND MODERATE TO INTENSE CONVECTION LAY OVER NORTH ANDAMAN SEA. SCATTERED LOW AND MEDIUM CLOUDS WITH WEAK TO MODERATE CONVECTION LAY OVER REST OF BAY OF BENGAL.

**\*PROBABILITY OF CYCLOGENESIS (FORMATION OF DEPRESSION) DURING NEXT 168 HRS:**

24 HOURS	24-48 HOURS	48-72 HOURS	72-96 HOURS	96-120 HOURS	120-144 HOURS	144-168 HOURS
NIL	NIL	NIL	NIL	NIL	NIL	NIL

**\*NOTE: EVERY 24HR FORECAST IS VALID UPTO 0300 UTC (0830 IST) OF NEXT DAY**

**ARABIAN SEA:**

SCATTERED TO BROKEN LOW AND MEDIUM CLOUDS WITH EMBEDDED INTENSE TO VERY INTENSE CONVECTION LAY OVER COMORIN AREA & SOUTHWEST ARABIAN SEA.

**\*PROBABILITY OF CYCLOGENESIS (FORMATION OF DEPRESSION) DURING NEXT 168 HRS:**

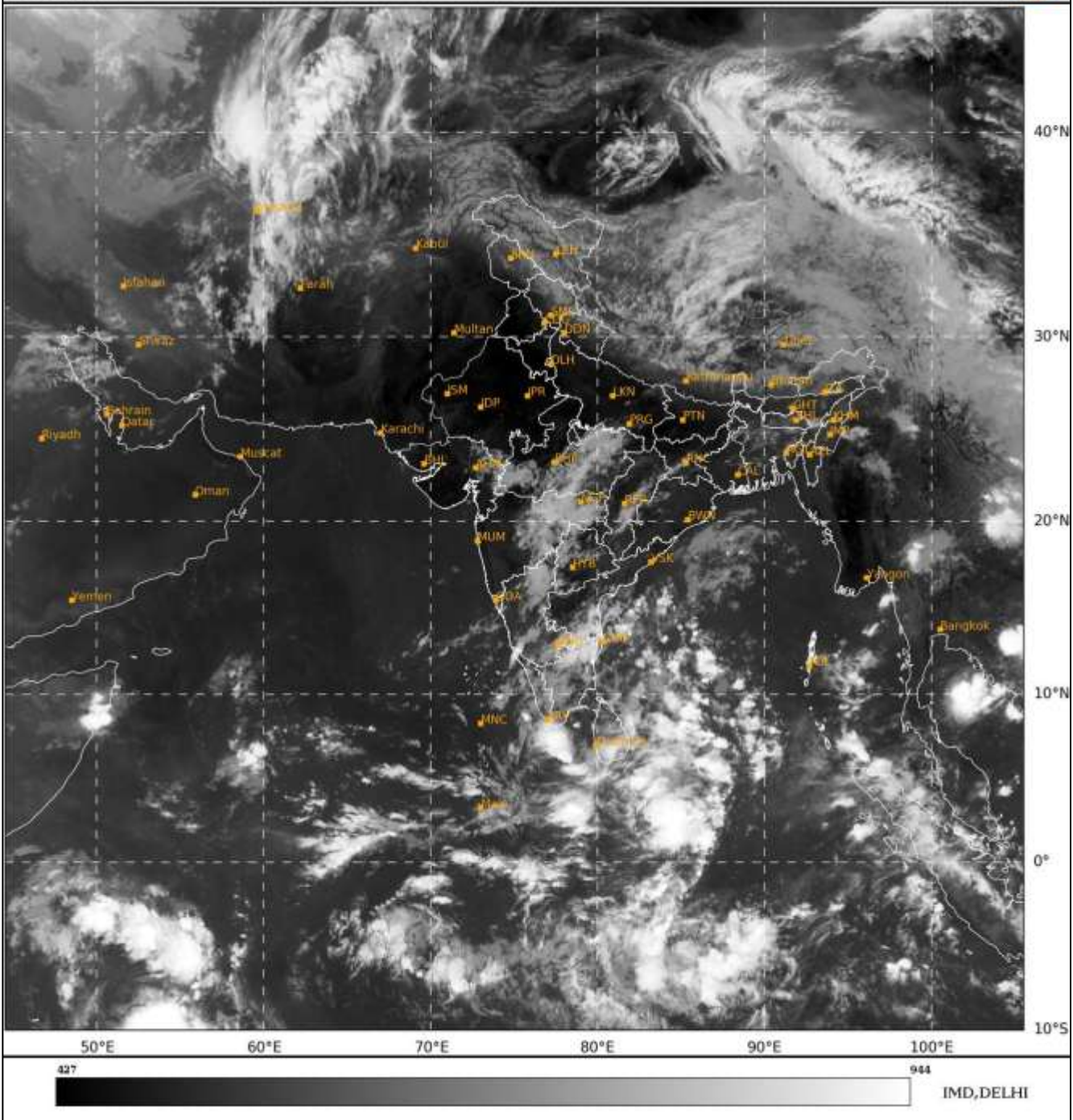
24 HOURS	24-48 HOURS	48-72 HOURS	72-96 HOURS	96-120 HOURS	120-144 HOURS	144-168 HOURS
NIL	NIL	NIL	NIL	NIL	NIL	NIL

**\*NOTE: EVERY 24HR FORECAST IS VALID UPTO 0300 UTC (0830 IST) OF NEXT DAY**

**REMARKS:** NIL.

SAT : INSAT-3D IMG  
IMG\_TIR1 10.8 um  
LIC Mercator

15-05-2024/(0300 to 0326) GMT  
15-05-2024/(0830 to 0856) IST



Cloud distribution: (a) Isolated: <25%, Scattered:25-50%, Broken: 51-75%, Solid:>75%, Convection Intensity: (a) Weak: Cloud Top Temperature (CTT) >-25°C, (b) Moderate: CTT: - 25°C to -40°C, (c) Intense: CTT: - 41°C to -70°C and (d) Very Intense: : Less than -70°C

PROBABILITY OF CYCLOGENESIS (FORMATION OF DEPRESSION):NIL: 0%, LOW: 1-33%, , MODERATE: 34-66% AND HIGH: 67-100%

This is a guidance Bulletin for WMO/ESCAP Panel Member countries. Visit respective National websites for Country specific Bulletins